

SC-T Series multi-function printers

Speed and precision for technical printing and scanning



EPSON[®]
EXCEED YOUR VISION



Switch to high-quality technical printing

The SureColor SC-T3100M, SC-T5100M and SC-T5400M are a range of multi-function technical printers that deliver outstanding quality prints of professional, architectural and engineering drawings – even with handwritten and highlighted annotations.

Simple to use and affordable, the SC-T3100M, SC-T5100M and SC-T5400M multi-function printers all produce high-quality, precise prints. The entry level SC-T3100M is ideal for smaller businesses, as its 24-inch frame is compact enough to carry from site to site. For larger prints and copies, opt for the 36-inch T5100M, and if you require a more high-volume solution, the SC-T5400M will best suit your needs.



SureColor SC-T3100M

At just 24-inches (610mm) wide, the SC-T3100M offers the best price performance in its segment, this model can scan up to 4.5-inches per second and up to 2.72m in length. It delivers exceptional results, at speed. Ideal for point of sale shops and posters, it takes only 34 seconds to print an A1 image.



SureColor SC-T5100M

Featuring all the benefits of the SC-T3100M, this multi-function printer is its larger 36-inch (914mm) counterpart. It's a step up for construction businesses that are looking for the top-quality of a low-volume printer, but with increased productivity levels.



SureColor SC-T5400M

This large on-site printer is able to scan up to 30.5m. At 36-inches (914mm) wide, and as the most versatile and efficient model, it can fit seamlessly into any engineering or architecture office. It prints on both matte and glossy media and offers borderless printing up to A0. Capable of a 0.02mm black line width, you won't lose the detail on documents.

Rely on Epson's refined printer technologies

Ensuring accuracy every time you print is essential for technical drawings, so Epson has made consistency a top priority.

Our highly intuitive proprietary technologies set these printers apart for hassle-free operation and high print quality. Epson's permanent, lifetime guaranteed PrecisionCore MicroTFP Printhead is supported by unique Nozzle Verification Technology. This prevents nozzle clogging through dust build-up and reduces misprints, wrinkles and shadows. While all three models provide consistent image quality when scanning handwritten and highlighted annotations, the SC-T5400M in particular achieves very sharp and accurate detail.

Compact design in a small footprint

The SC-T3100M may be a large-format printer, but it needs little space. Its unobtrusive compact desktop design will fit effortlessly into your workplace. While the optional stand with catch basket makes it a safe and robust portable solution.

Affordable without compromising quality

These three SC-T Series models are competitively priced but still offer professional performance. Thanks to low maintenance and running costs, total cost of ownership is reduced. Plus, with comprehensive, extendable CoverPlus warranty packages, you'll have total peace of mind too.

High-production volume

Throughout the complete multi-function SC-T Series you can expect high-production volume with minimum downtime, however the T5400M model, with capacity for 150 metres of media, has stand-out competencies.





Stunning graphics

Each of these models effortlessly achieves high-quality large-format graphics, making them the perfect choice for those in the construction industry as well as retailers, supermarkets, schools and colleges.



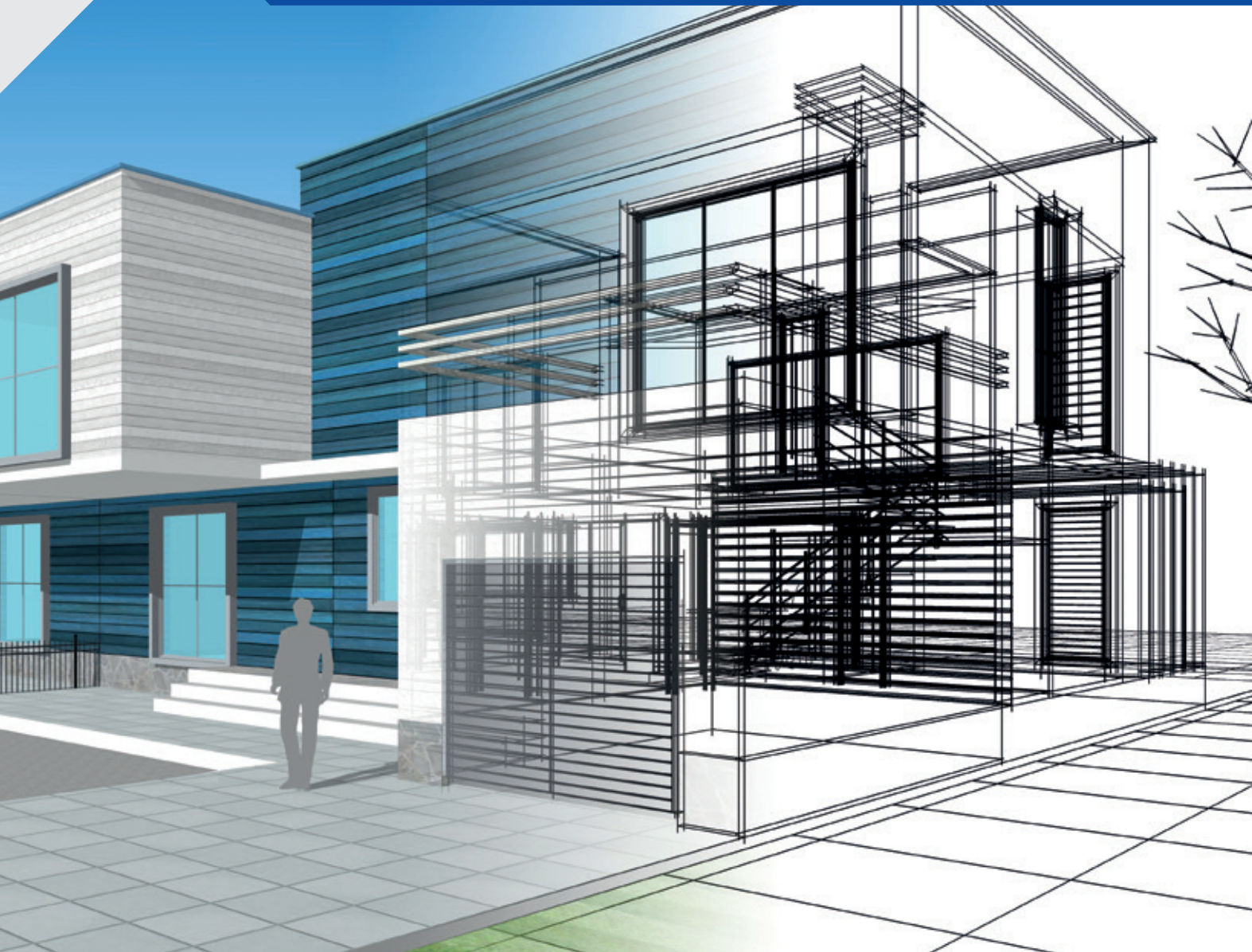
Multi-function printing

From public sector organisations to commercial copy shops, these highly versatile models are offering the increased operational efficiency of printing, scanning and copying all in one. And as a result, they are changing the way large-scale documents are printed and stored.



Technical drawings

These modern-day plotters are designed for handling large-format printing of CAD and technical drawings for architects, engineers and other construction industry professionals. They're ideally suited for reproducing blueprints, maps or any other large-format document stored as a hard copy.



Discover highly intuitive multi-function printing

All SureColor SC-T Series multi-function printer models will make your large-format printing easier. Operation is highly intuitive, so even users with different working methods and requirements will find scanning and printing documents refreshingly straightforward.

With each printer, the top-loading integrated scanner, copier, and small footprint are ideal for all types of work environments. A large 4.3-inch colour LCD touch-screen panel puts users in control with clear instructions and easy viewing of operational status information. Epson's innovative technology enables hassle-free operation with Wi-Fi connectivity supporting AirPrint, and the ability to scan and print PDFs directly to and from USB connections.

The perfect fit for your business workflow

The scanners support many electronic formats, including encrypted PDF, JPEG and TIFF. Designed by Epson, these models from the SC-T Series are compatible with all major technical software vendors, including Autodesk, Bentley, Grafisoft, Dassault and Nemetshek.



Model		SureColor SC-T3100M	SureColor SC-T5100M	SureColor SC-T5400M
Technology	All-in-One Functions	Print, Scan, Copy		
	Ink Type	UltraChrome XD2 Pigment inks		
Scan	Max scan length	2.72m		30.5m
	Scan speed (A1 - up to)	Mono 4.5 IPS Colour 1.5 IPS		Mono 7.5 IPS Colour 4.5 IPS
	Document integration	Mail server, secure mail server, FTP, secure FTP, Network, USB, USB memory device		
	Scan data formats	PDF, PDF/A. Encrypted PDF. (single/multi page). TIFF B&W (2.72m) (single/multi page). JPEG.		PDF, PDF/A. Encrypted PDF. (single/multi page). TIFF B&W (30.5m) (single/multi page). JPEG.
	Scanner Type	CIS - Single LED		
Print	Resolution	Up to 600 x 600dpi		
	Print speed (A1)	As fast as 34 seconds	As fast as 31 seconds	As fast as 22 seconds
	Precision quality	0.02mm +/- 0.1%		
	Minimum droplet size	4pl. (with variable droplet size technology)		
	Print resolution	2400 x 1200 dpi		
	Print Head	Lifetime - PrecisionCore MicroTFP Printhead		
Paper / Media	Margins	3mm top, sides, bottom		3mm top, sides, bottom or borderless
	Cut sheet (integrated Auto Sheet Feeder)	A5 - A1	A5-A0	-
	Paper thickness	Roll 0.05mm to 0.21mm Cut sheet 0.12mm to 0.27mm		Roll 0.08mm to 0.3mm Cut sheet 0.08mm to 0.3mm
Copy	Roll specification	2-inch core MAX diameter 110mm / weight 5kg		2/3-inch core MAX 170mm / weight 12kg
	Copy workflow speed	60 seconds (A1)		44 seconds (A1)
	Reduction / Enlargement	25% - 400%	25% - 400%	25% - 400%
	Default setting	Text/line drawing & image, tracing paper, recycled, blueprint, blueprint inverted, watercolor rendering		
Security	Max copies	99		
		IEEE802, SNMPv3, TLS/SSL, IPsec, Admin mode, WPA3, SMTPs, POPs, FTPs		IEEE802, SNMPv3, TLS/SSL, SMTPs, POPs, FTPs, IP Sec, WPA3, Admin mode
General	Memory	1GB + 8GB		
	Dimensions	970 x 680 x 245mm	1268 x 696 x 974mm	1385 x 750 x 1070mm
	Weight	34kg	45kg	89kg
	Mobile	Apple AirPrint, Wi-Fi direct		
	Voltage	110v - 240v 50/60hz		
	Compatible OS	MAC OS 10.6.8 or later, Windows 8 or later		
	Interfaces	Wireless LAN 802, USB 3.0, Gigabit ethernet, Wi-Fi direct		
	Auto Media Switching	Yes - as standard		-
	Options	Portable stand with basket 24" Spindle A1 Document carrier sheet	36" Spindle A0 Document carrier sheet	
	Consumables	CMY 26/50ml MK 50/80ml Maintenance Box Cutter unit Self-maintenance kit		CMY- MK 110/350ml Borderless replacement kit Maintenance box Cutter unit
Software	Epson Printer Driver, Epson Device Admin, Epson Cloud Solution PORT			
Warranty	Minimum 1 year CoverPlus Optional Extensions up to 5 years			

