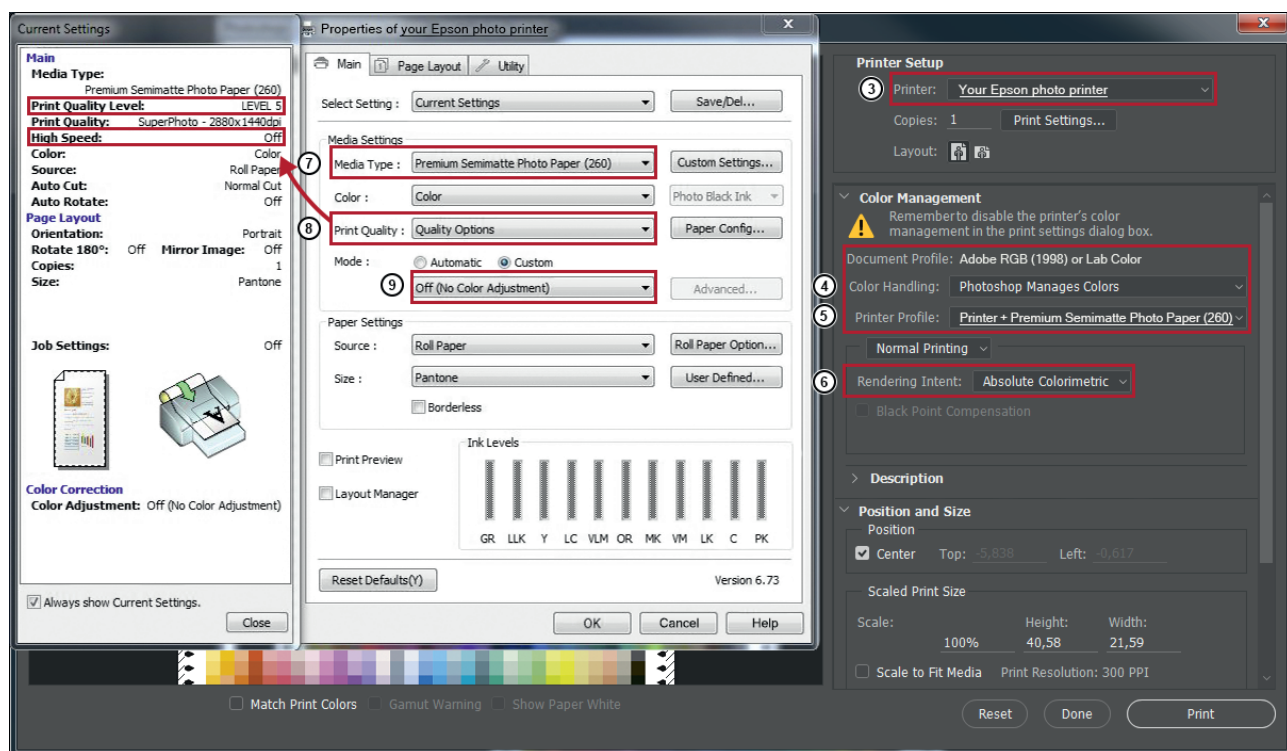
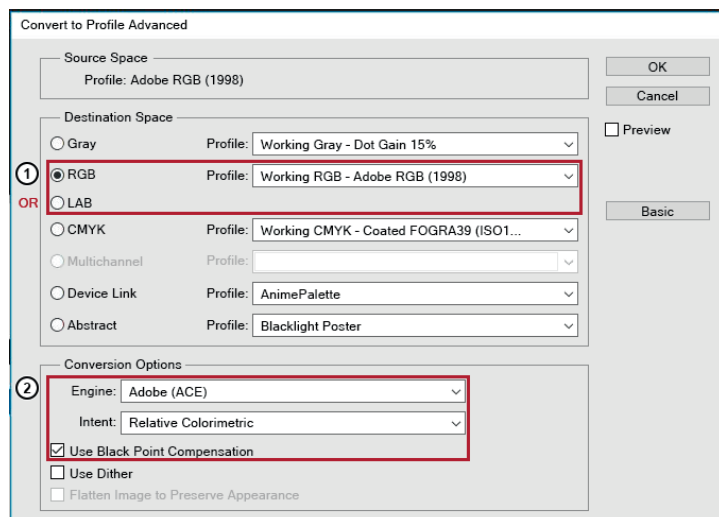


STEP-BY-STEP INSTRUCTIONS 3

PHOTOSHOP: PRINT SETTINGS FOR RGB OR LAB COLOURS

Photoshop print settings for your Epson photo printer

Before you start, ensure you are using the best and most up-to-date version of everything (firmware, printer drivers etc.) and calibrate your printer. Decide whether you want to use the RGB or LAB workflow and convert your file in either RGB or LAB colour mode. Please follow the steps below and select the highlighted print settings for the best possible print results (You can leave all other settings unchanged or select individual ones as required):



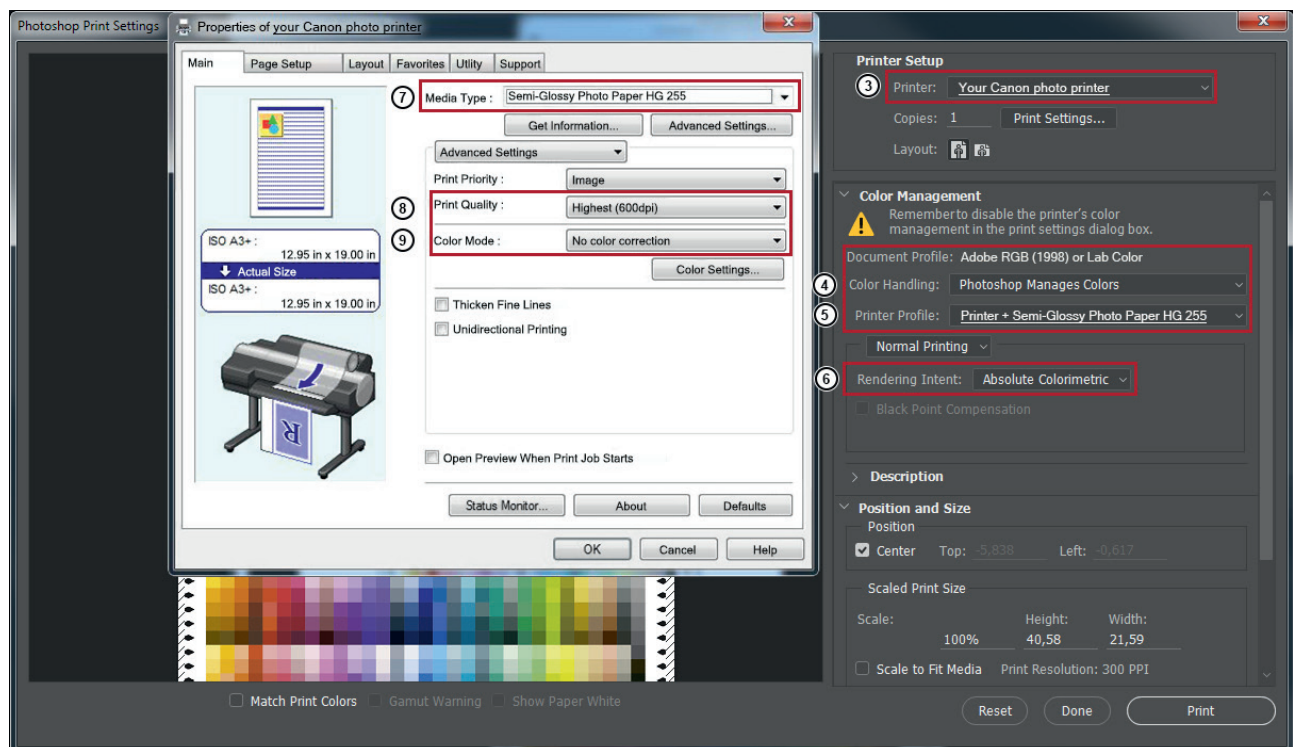
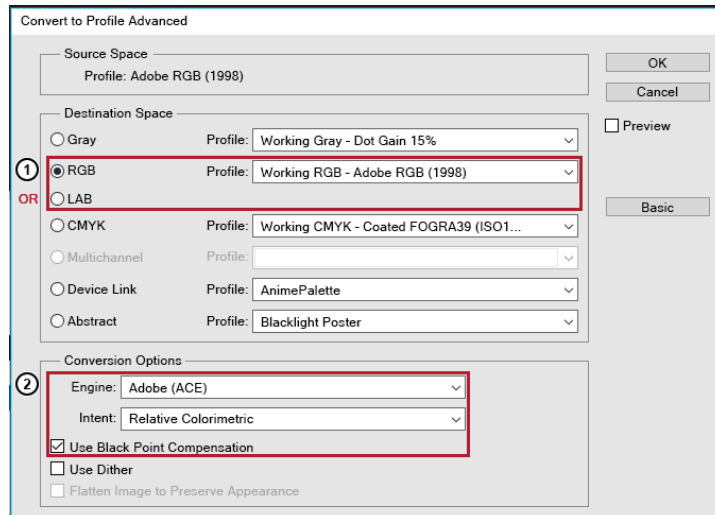
Any questions? If so, please contact your dealer for further information.

STEP-BY-STEP INSTRUCTIONS 3

PHOTOSHOP: PRINT SETTINGS FOR RGB OR LAB COLOURS

Photoshop print settings for your Canon photo printer

Before you start, ensure you are using the best and most up-to-date version of everything (firmware, printer drivers etc.) and, if possible, calibrate your printer to PANTONE® VIBRANT by Felix Schoeller. Decide whether you want to use the RGB or LAB workflow and convert your file in either RGB or LAB colour mode. Please follow the steps below and select the highlighted print settings for the best possible print results (You can leave all other settings unchanged or select individual ones as required):



Any questions? If so, please contact your dealer for further information.